

# KCP55ZX5170HP



## BOOM SPECIFICATIONS

Vertical reach	54.3 M	(178' 3")
Horizontal reach	50.2 M	(164' 9")
Reach from front of truck	47.1 M	(154' 7")
Unfolding height	12.0 M	(39' 4")
Section articulation	92° / 180° / 225° / 180° / 210°	
Rotation	370°	
Delivery line	125mm	(5")
Proportional boom	Yes	
End hose length	3.5 M	(11' 6")
Outrigger spread-front	9.1 M	(29' 11")
Outrigger spread-rear	12.35 M	(40' 6")
Max. outrigger weight	40,000 kg	(88185 lbs)

## 55ZX225 - OPTIONAL

Maximum output	225 m <sup>3</sup> /h	(294 yd <sup>3</sup> /h)
Concrete cylinder	Ø280 x 2100mm (11" x 83")	
Stroke per minute	32	
Hydraulic pump	Rexroth A20VLO190	

## PUMP SPECIFICATIONS

Maximum output	170 m <sup>3</sup> /h	(222 yd <sup>3</sup> /h)
Concrete cylinder	Ø230 x 2100mm (9" x 83")	
Stroke per minute	32	
Concrete pressure	95 bar	(1377 psi)
Hopper capacity	0.6 m <sup>3</sup>	(21 ft <sup>3</sup> )
S-tube	Ø230 x Ø180 (9" x 7") Big mouth	
Hydraulic pump	Rexroth A20VLO190	
Cycling system	Hydraulic with manual overrides	
Max aggregate size	40 mm	(1 1/2")
Water Tank Volume	649L	171.4Gal

\* Maximum theoretical values listed.

\*Dimension will vary with different truck makes, models and specifications.

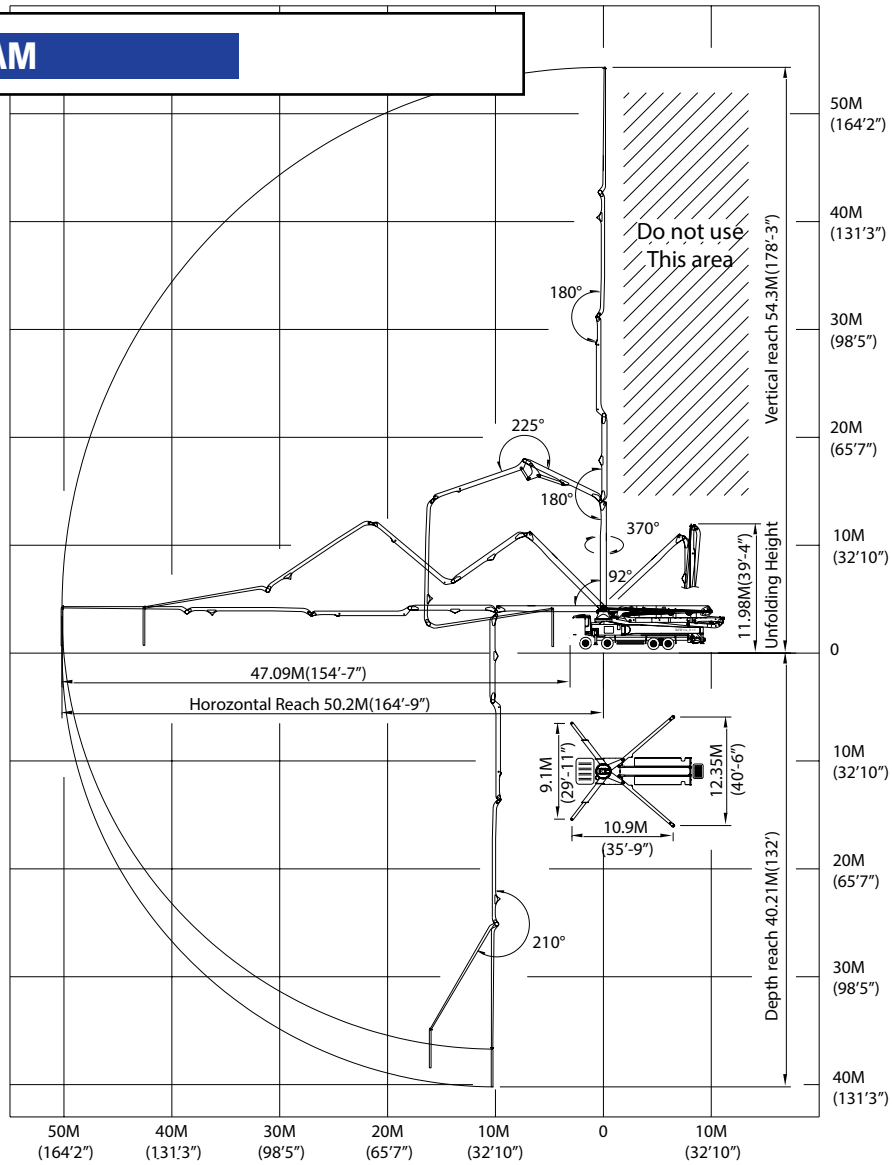
\*Right to make technical amendments reserved.

## TRUCK MOUNTED SPECIFICATIONS

Available: MR MACK, GRANITE MACK, PETERBILT, INTERNATIONAL, FREIGHTLINER.

**Simply the Best.**

## WORKING DIAGRAM



## WEIGHT DIAGRAMS

\*Photos and drawings are for illustrative purpose only.  
 \*Dimension will vary with different truck makers, models and specifications.  
 \*Right to make technical amendments reserved.

