

KCP37ZX5170



BOOM SPECIFICATIONS

Vertical reach	36.34 M	(119' 3")
Horizontal reach	32.07 M	(105' 3")
Reach from front of truck	28.84 M	(94' 7")
Unfolding height	7.30 M	(23' 11")
Section articulation	94° / 180° / 250° / 245°	
Rotation	370°	
Delivery line	125mm	(5")
Proportional boom	Yes	
End hose length	3 M	(10')
Outrigger spread-front	5.63M	(18' 6")
Outrigger spread-rear	6.67 M	(21' 10")
Max. outrigger weight	17,500 kg	(38,581 lbs)

PUMP SPECIFICATIONS

Maximum output	170 m ³ /h	(222 yd ³ /h)
Concrete cylinder	Ø230 x 1800mm (9" x 71")	
Stroke per minute	32	
Concrete pressure	69bar	(1000 psi)
Hopper capacity	0.6 m ³	(21 ft ³)
S-tube	Ø220 x Ø180 (8.7" x 7") Big mouth	
Hydraulic pump	Rexroth A11VL0260	
Cycling system	Hydraulic with manual overrides	
Max aggregate size	40 mm	(1 1/2")
Water Tank Volume	450L	118.9 Gal

* Maximum theoretical values listed.

*Dimension will vary with different truck makes, models and specifications.

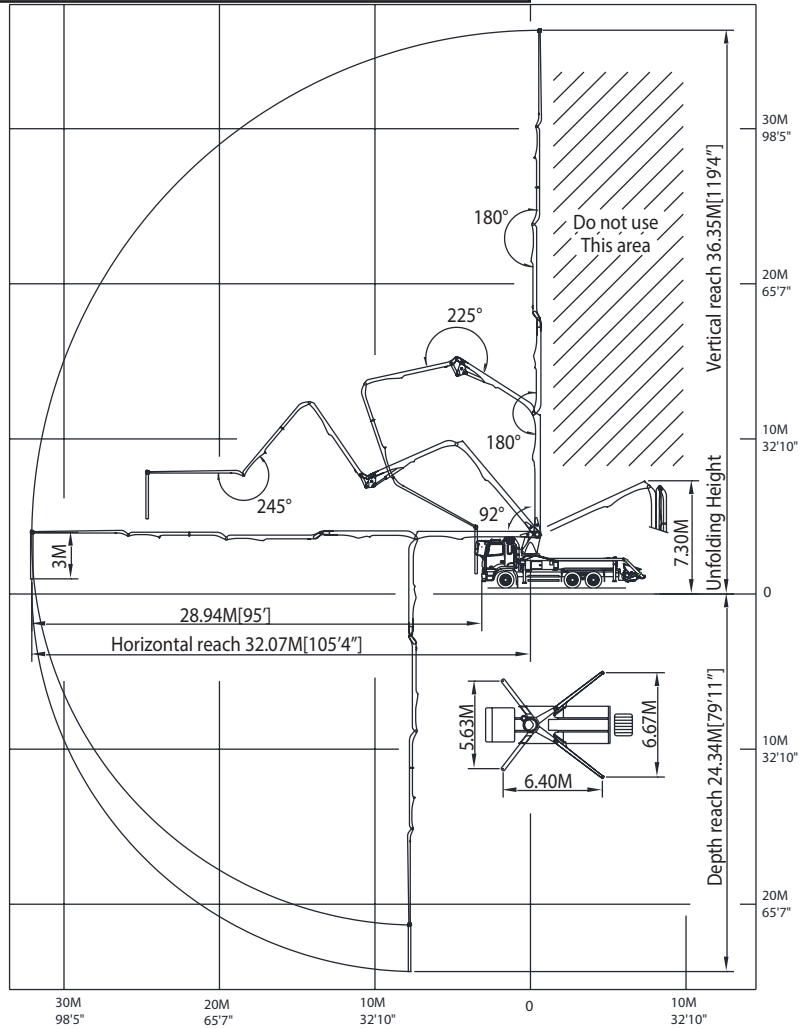
*Right to make technical amendments reserved.

TRUCK MOUNTED SPECIFICATIONS

Available: MR MACK, GRANITE MACK, PETERBILT, INTERNATIONAL, FREIGHTLINER.

Simply the Best.

WORKING DIAGRAM



WEIGHT DIAGRAMS

*Photos and drawings are for illustrative purpose only.
 *Dimension will vary with different truck makers, models and specifications.
 *Right to make technical amendments reserved.

