

KCP32RX5170



BOOM SPECIFICATIONS

Vertical reach	31.9 M	(104' 9")
Horizontal reach	27.7 M	(91')
Reach from front of truck	25.4 M	(83' 3")
Unfolding height	5.8 M	(19' 1")
Section articulation	92° / 180° / 240° / 220° / 220°	
Rotation	370°	
Delivery line	125mm	(5")
Proportional boom	Yes	
End hose length	3.5 M	(11'6")
Outrigger spread-front	6.18M	(20' 3")
Outrigger spread-rear	7.15 M	(23' 6")
Max. outrigger weight	20,500 kg	(45195 lbs)

PUMP SPECIFICATIONS

Maximum output	170 m ³ /h	(222 yd ³ /h)
Concrete cylinder	Ø230 x 2100mm (9" x 83")	
Stroke per minute	32	
Concrete pressure	69bar	(1000 psi)
Hopper capacity	0.6 m ³	(21 ft ³)
S-tube	Ø220 x Ø180 (8.7" x 7") Big mouth	
Hydraulic pump	Rexroth A11VL0260	
Cycling system	Hydraulic with manual overrides	
Max aggregate size	40 mm	(1 1/2")
Water Tank Volume	454 L	120 Gal

* Maximum theoretical values listed.

*Dimension will vary with different truck makes, models and specifications.

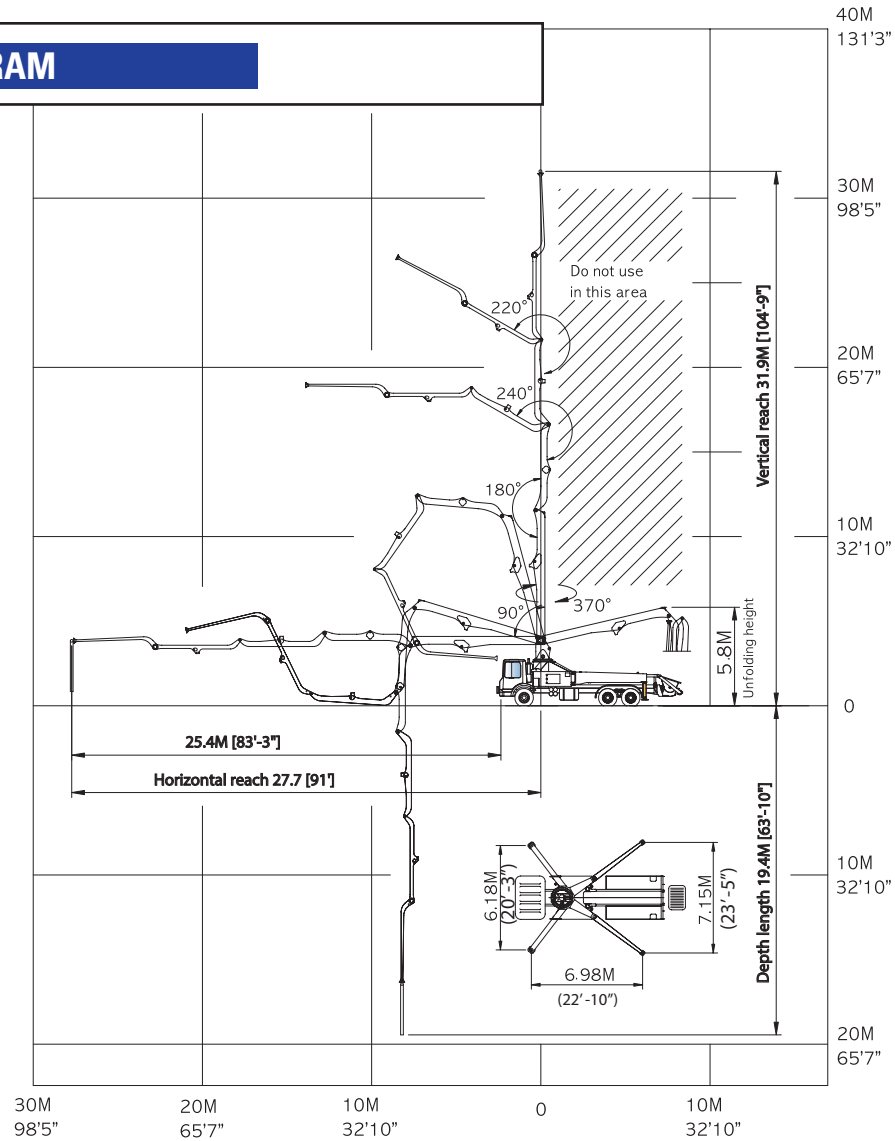
*Right to make technical amendments reserved.

TRUCK MOUNTED SPECIFICATIONS

Available: MR MACK, GRANITE MACK, PETERBILT, INTERNATIONAL, FREIGHTLINER.

Simply the Best.

WORKING DIAGRAM



WEIGHT DIAGRAMS

*Photos and drawings are for illustrative purpose only.
 *Dimension will vary with different truck makers, models and specifications.
 *Right to make technical amendments reserved.

