

KCP31ZX5120



BOOM SPECIFICATIONS

Vertical reach	30.6 M	(100' 5")
Horizontal reach	26.5 M	(86' 11")
Reach from front of truck	23.7 M	(77' 9")
Unfolding height	5.96 M	(19' 7")
Section articulation	92° / 180° / 230° / 180° / 235°	
Rotation	370°	
Delivery line	125mm	(5")
Proportional boom	Yes	
End hose length	3 M	(9'10")
Outrigger spread-front	5.64 M	(18' 6")
Outrigger spread-rear	6.12 M	(20' 1")
Max. outrigger weight	14,000 kg	(30865 lbs)

PUMP SPECIFICATIONS

Maximum output	120 m ³ /h	(157 yd ³ /h)
Concrete cylinder	Ø230 x 1800mm (9" x 71")	
Stroke per minute	32	
Concrete pressure	70 bar	(1015 psi)
Hopper capacity	0.6 m ³	(21 ft ³)
S-tube	Ø220 x Ø180 (8.7" x 7") Big mouth	
Hydraulic pump	Rexroth A11VL0190	
Cycling system	Hydraulic with manual overrides	
Max aggregate size	40 mm	(1 1/2")
Water Tank Volume	450 L	118.9 Gal

*Dimension will vary with different truck makes, models and specifications.

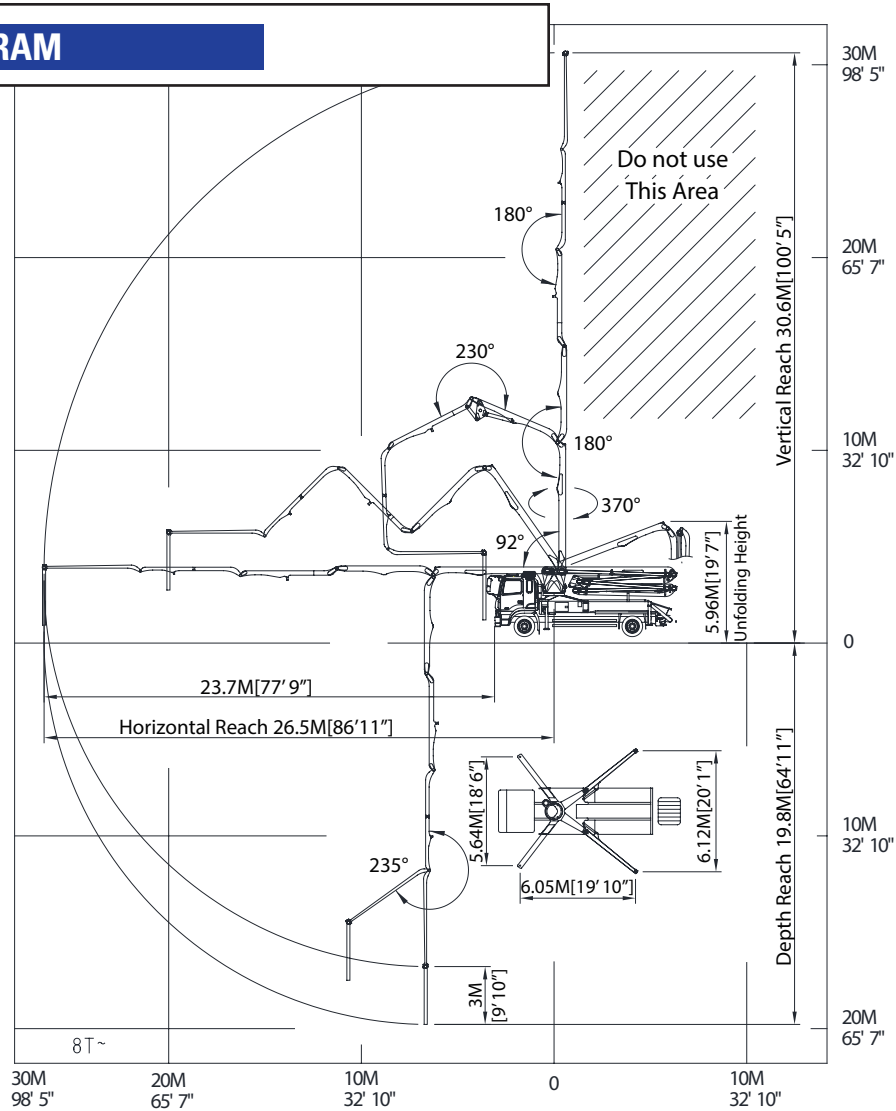
*Right to make technical amendments reserved.

TRUCK MOUNTED SPECIFICATIONS

Available: MR MACK, GRANITE MACK, PETERBILT, INTERNATIONAL, FREIGHTLINER.

Simply the Best.

WORKING DIAGRAM



WEIGHT DIAGRAMS

*Photos and drawings are for illustrative purpose only.
 *Dimension will vary with different truck makers, models and specifications.
 *Right to make technical amendments reserved.

