

KCP28ZX120



BOOM SPECIFICATIONS

Vertical reach	27.1 M	(88' 11")
Horizontal reach	23.2 M	(76' 1")
Reach from front of truck	20.3 M	(66' 7")
Unfolding height	6.6 M	(21' 8")
Section articulation	92° / 180° / 250° / 245°	
Rotation	370°	
Delivery line	125mm	(5")
Proportional boom	Yes	
End hose length	3 M	(10')
Outrigger spread-front	5.6M	(18.4')
Outrigger spread-rear	6 M	(19'8")
Max. outrigger weight	13,000 kg	(28660 lbs)

PUMP SPECIFICATIONS

Maximum output	120 m ³ /h	(157 yd ³ /h)
Concrete cylinder	Ø230 x 1800mm (9" x 71")	
Stroke per minute	32	
Concrete pressure	70 bar	(1015 psi)
Hopper capacity	0.6 m ³	(21 ft ³)
S-tube	Ø220 x Ø180 (8.7" x 7") Big mouth	
Hydraulic pump	Rexroth A11VLO190	
Cycling system	Hydraulic with manual overrides	
Max aggregate size	40 mm	(1 1/2")
Water Tank Volume	450 L	118.9 Gal

* Maximum theoretical values listed.

*Dimension will vary with different truck makes, models and specifications.

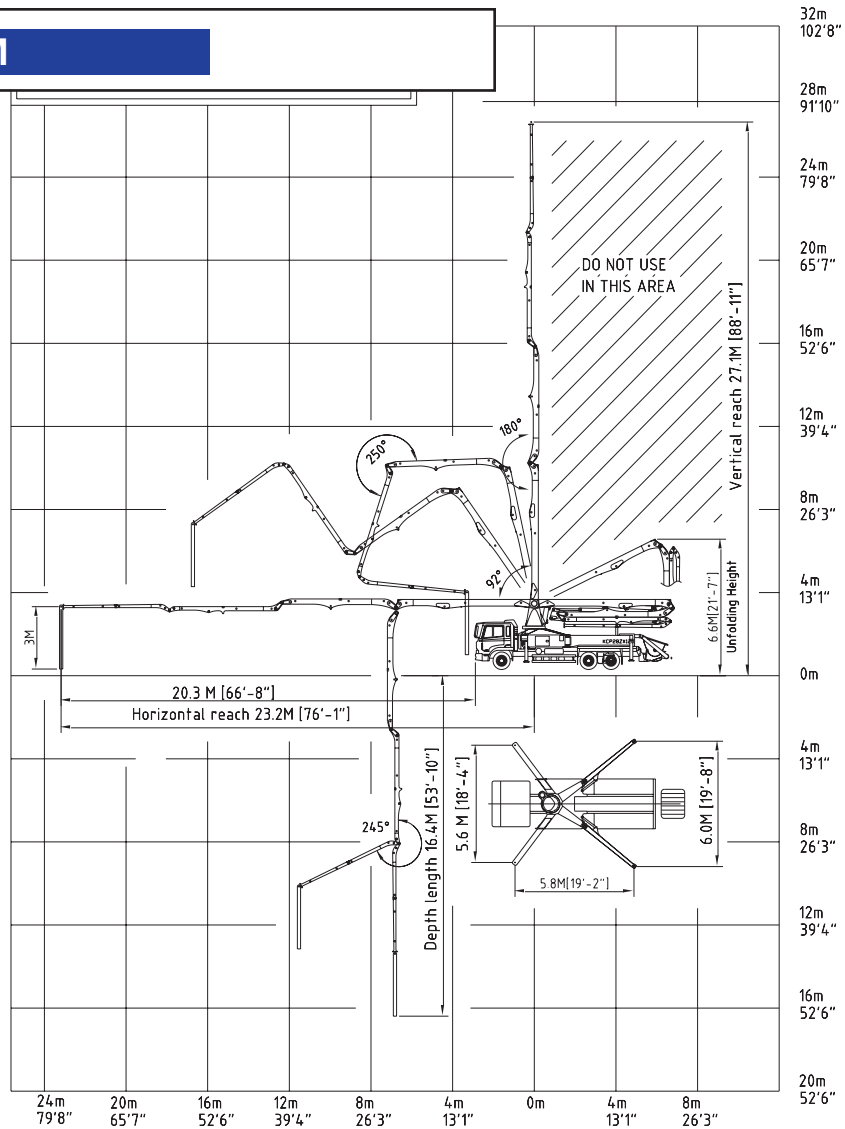
*Right to make technical amendments reserved.

TRUCK MOUNTED SPECIFICATIONS

Available: MR MACK, GRANITE MACK, PETERBILT, INTERNATIONAL, FREIGHTLINER.

Simply the Best.

WORKING DIAGRAM



WEIGHT DIAGRAMS

*Photos and drawings are for illustrative purpose only.
 *Dimension will vary with different truck makers, models and specifications.
 *Right to make technical amendments reserved.

